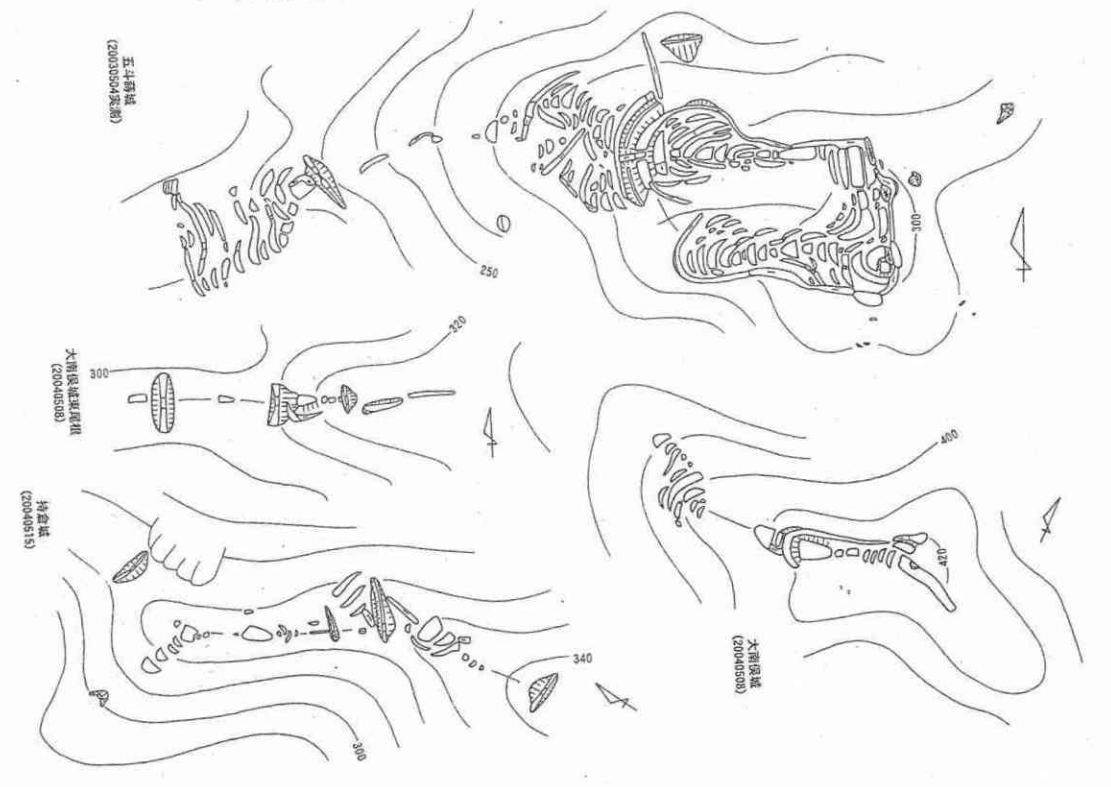
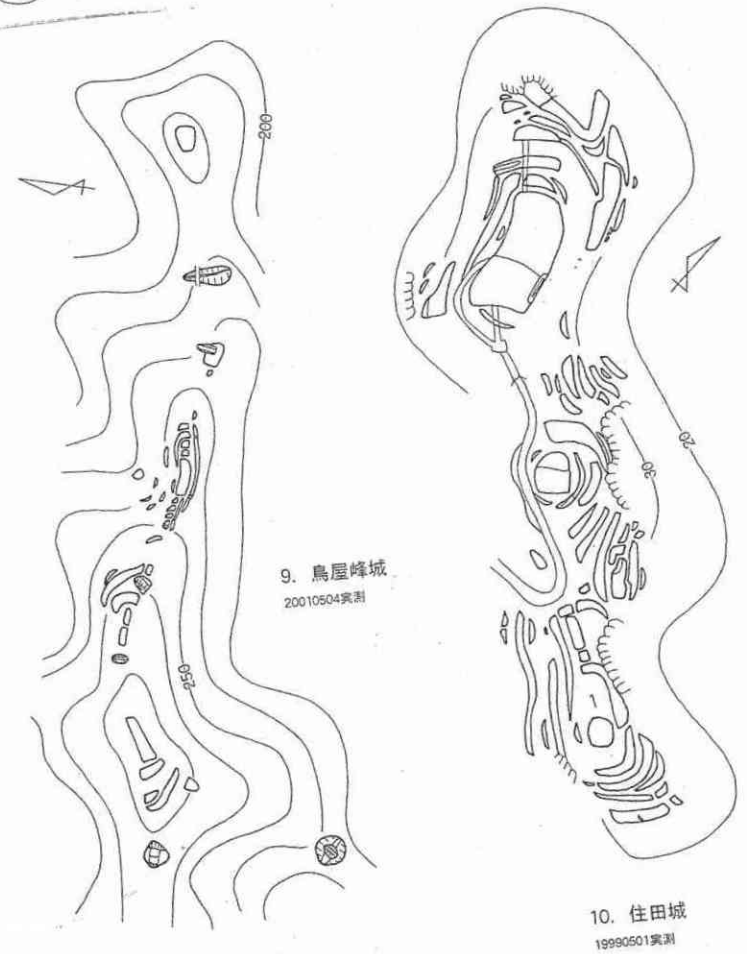
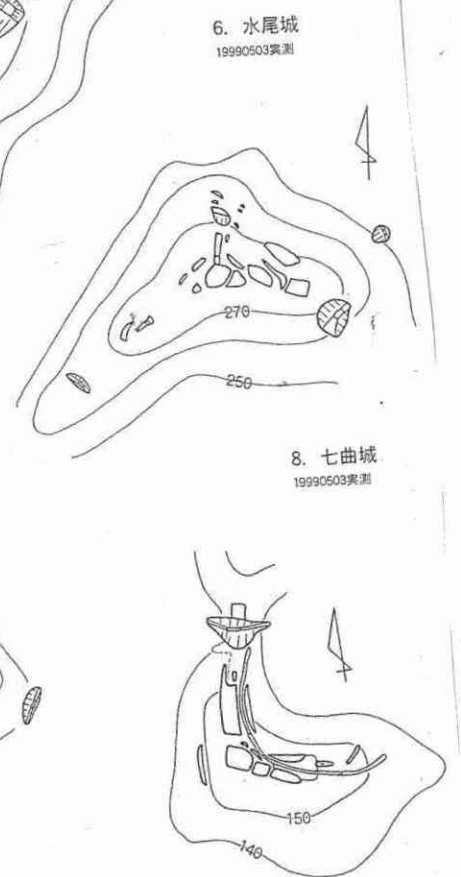
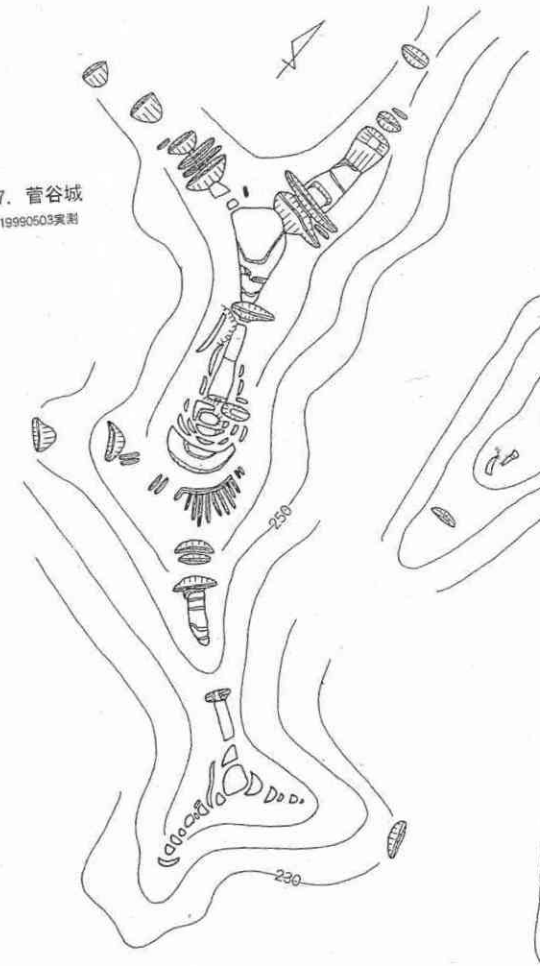
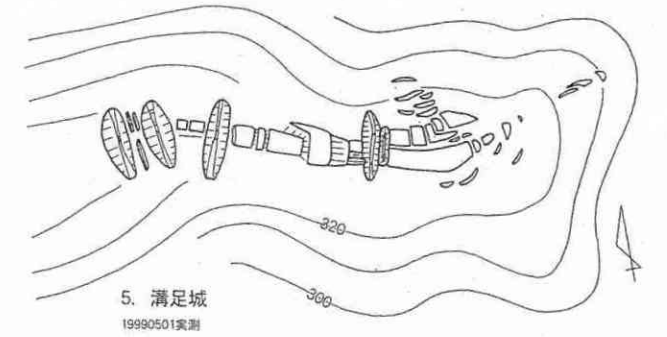
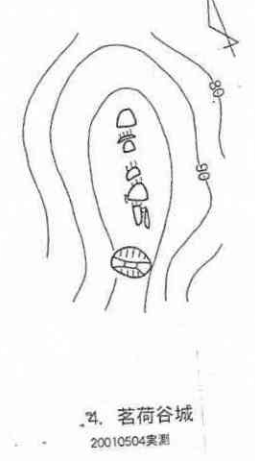
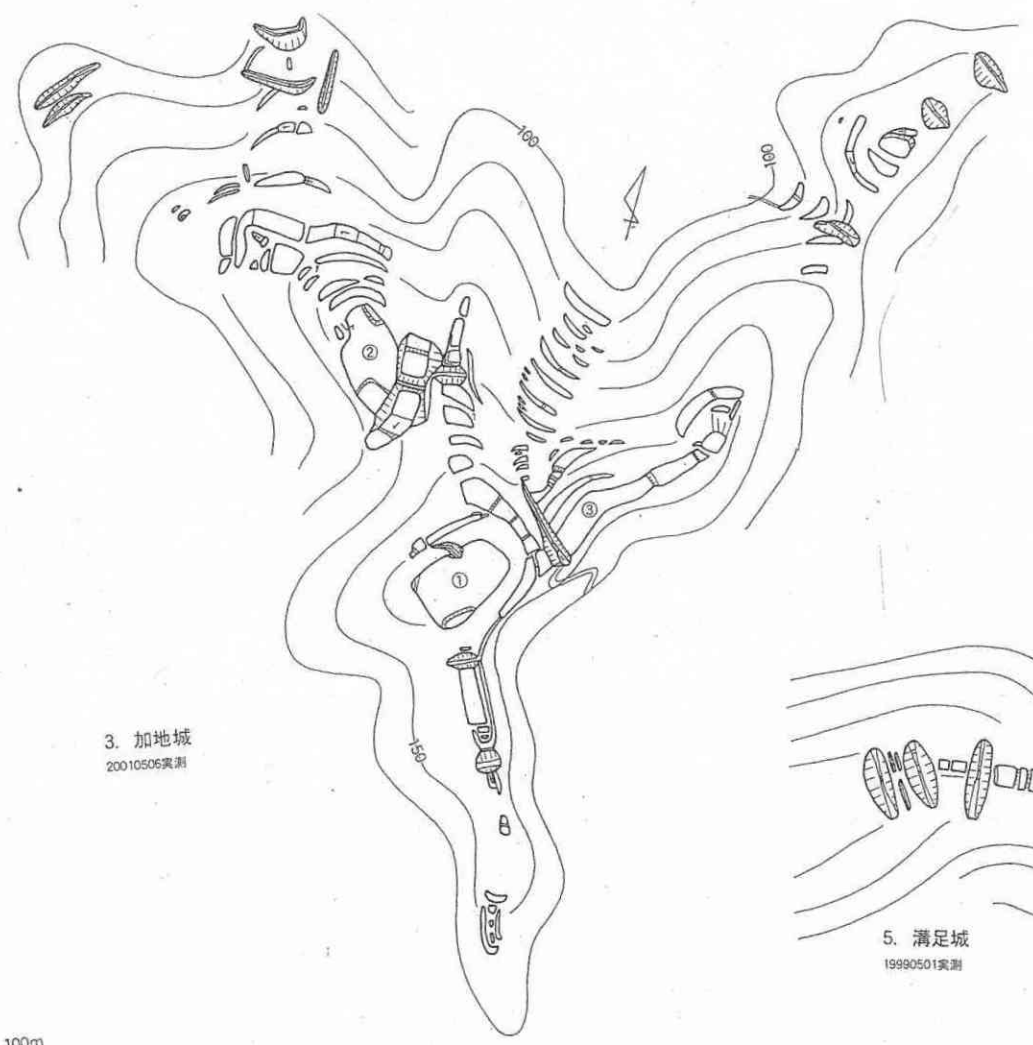
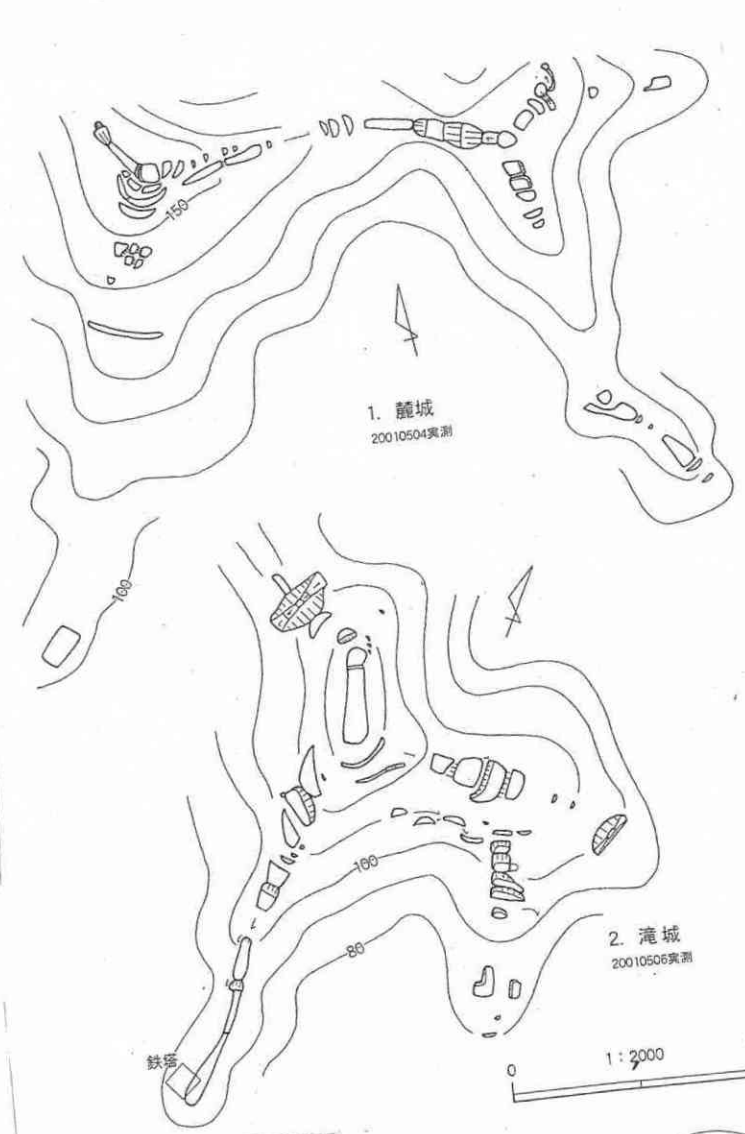
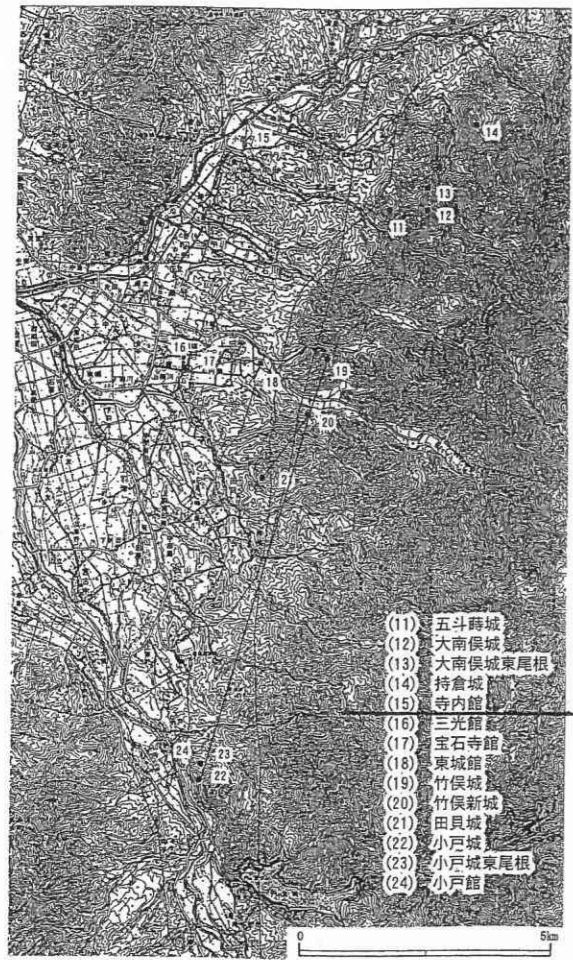


第1図 加地領の城館位置図 (国土地理院発行 1:50000 地形図「中条・新発田」)



加地



- (11) 五斗薙城
- (12) 大南俣城
- (13) 大南俣城東尾根
- (14) 持倉城
- (15) 寺内館
- (16) 三光館
- (17) 宝石寺館
- (18) 東城館
- (19) 竹俣城
- (20) 竹俣新城
- (21) 田貝城
- (22) 小戸城
- (23) 小戸城東尾根
- (24) 小戸館

第6図 城館位置図 (1:100000) (原図: 国土地理院1:50000「新発田」)

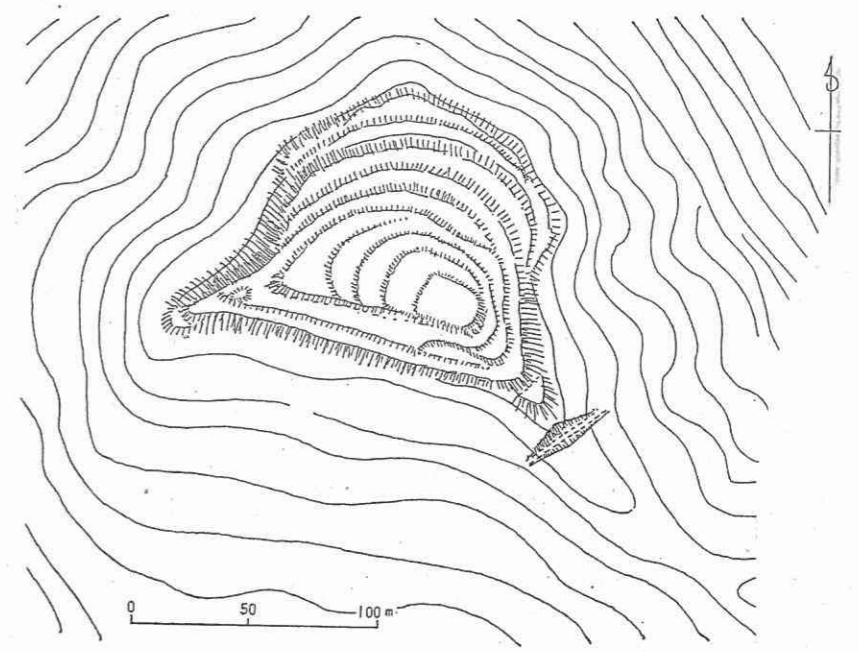
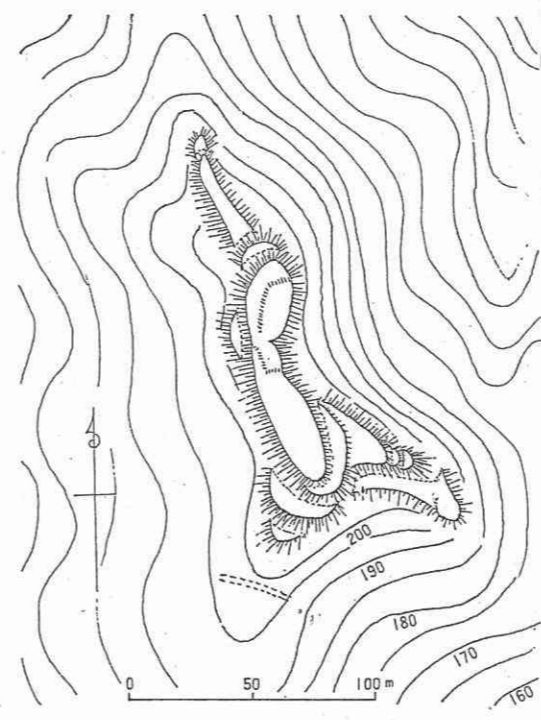
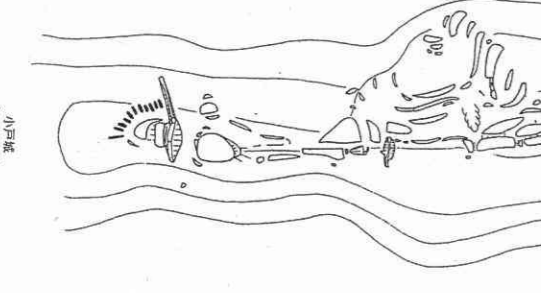
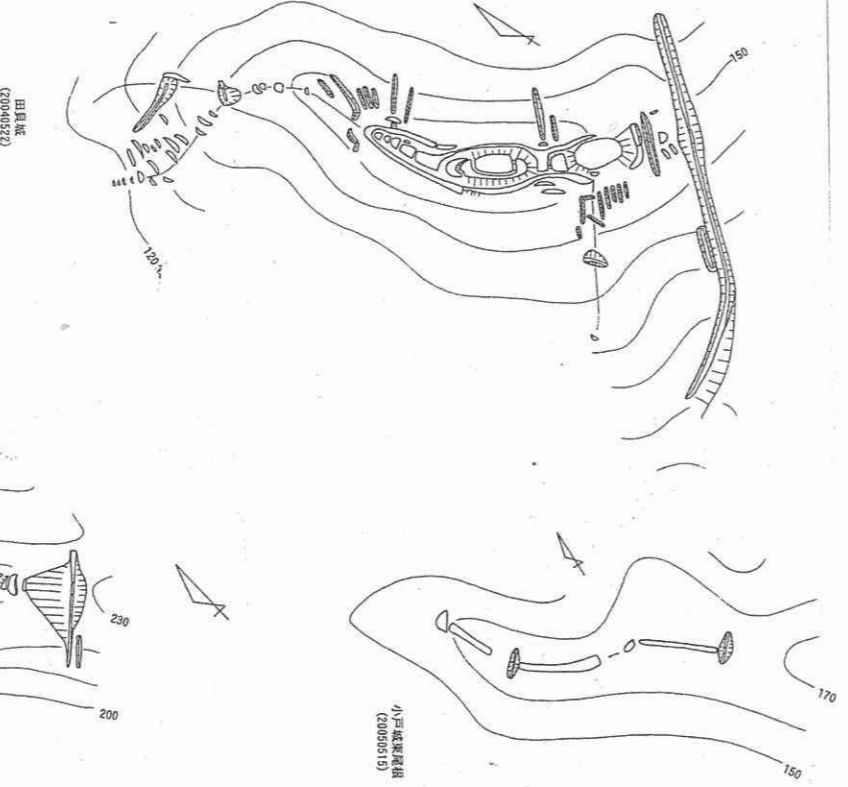
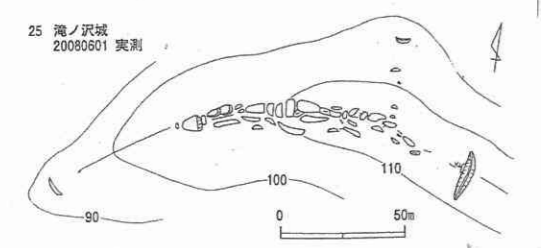
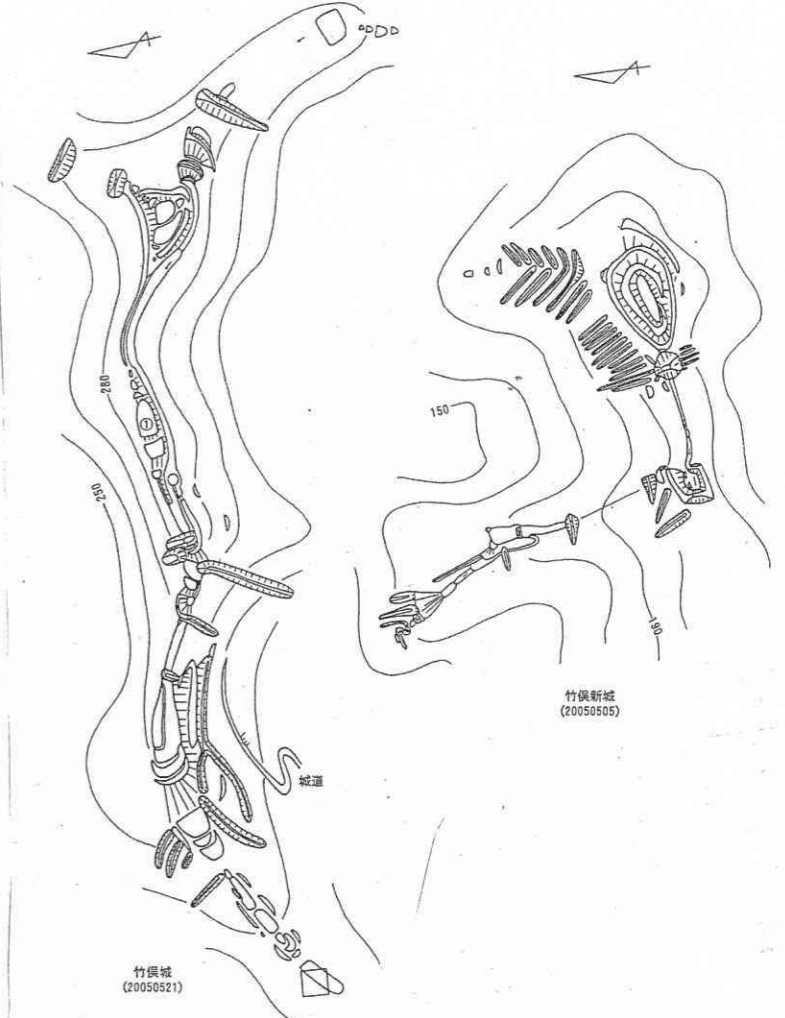
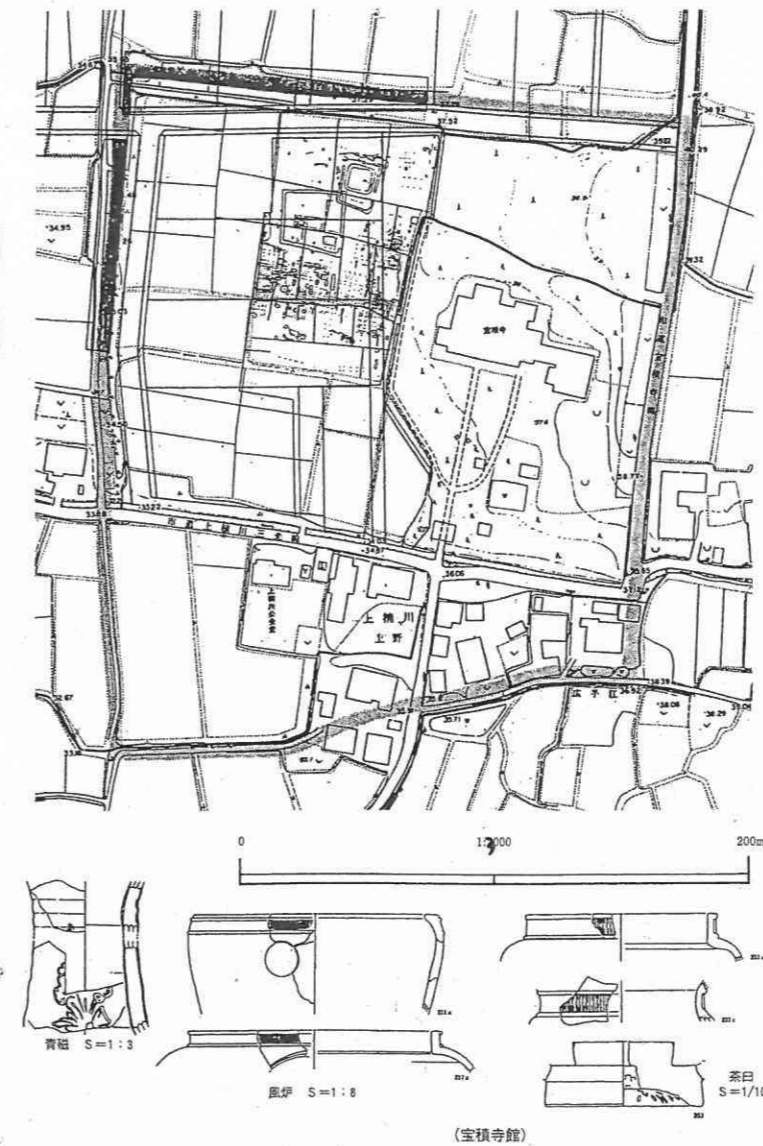
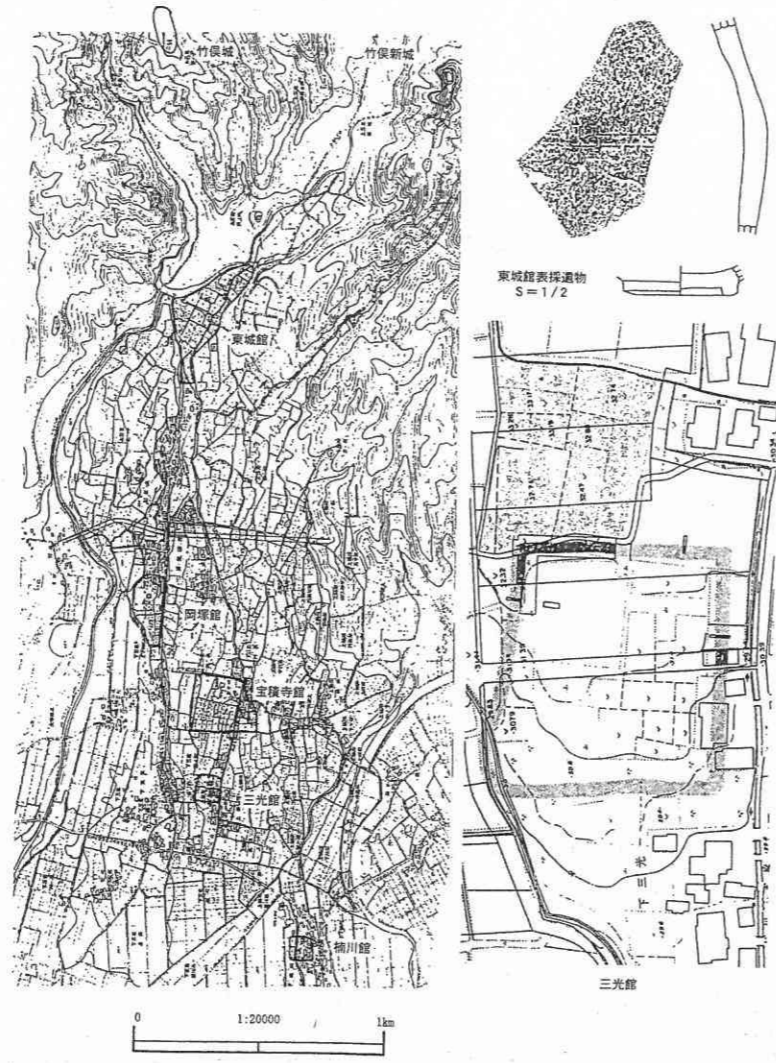


図4 関ヶ峯城

図2 笠菅城跡

伊藤 1980

竹俣

